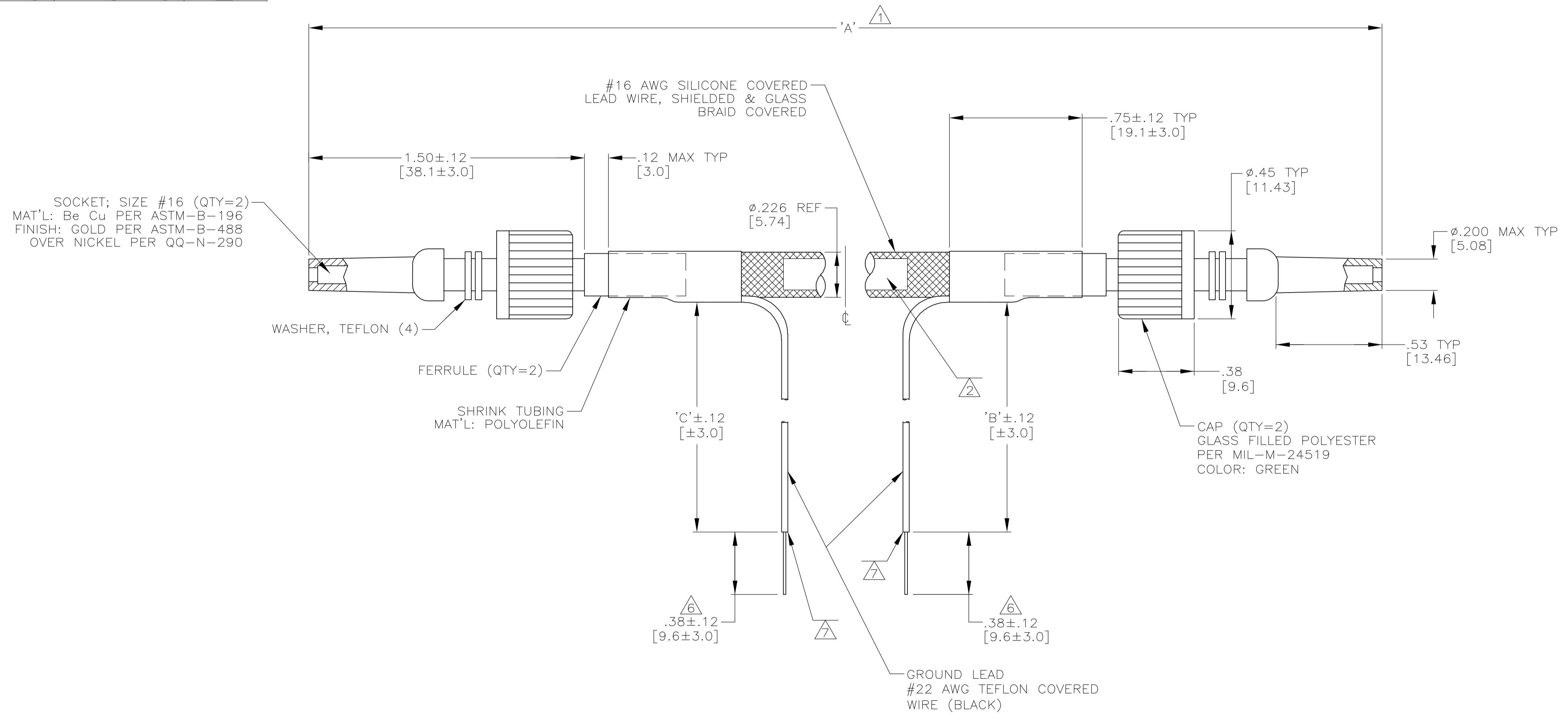


PART NO.	'A'	'B'	'C'	REMARKS
858885-1	120.00 [3048.0]	6.00 [152.4]	6.00 [152.4]	△
858885-2	10.00 [254.0]	8.00 [203.2]	8.00 [203.2]	△
858885-3	12.00 [304.8]	8.00 [203.2]	8.00 [203.2]	△ OBSOLETE
858885-4	24.00 [609.6]	8.00 [203.2]	8.00 [203.2]	△
858885-5	80.00 [2032.0]	20.00 [508.0]	20.00 [508.0]	△ OBSOLETE
858885-6	48.00 [1219.2]	6.00 [152.4]	6.00 [152.4]	△
858885-7	360.00 [9144.0]	6.00 [152.4]	6.00 [152.4]	△ OBSOLETE
858885-8	80.00 [2032.0]	12.00 [304.8]	12.00 [304.8]	△
858885-9	72.00 [1828.8]	12.00 [304.8]	-	△ OBSOLETE
1-858885-0	60.00 [1524.0]	12.00 [304.8]	12.00 [304.8]	△ OBSOLETE
1-858885-1	144.00 [3657.6]	12.00 [304.8]	12.00 [304.8]	△
1-858885-2	108.00 [2743.2]	12.00 [304.8]	12.00 [304.8]	△ OBSOLETE
1-858885-3	103.00 [2616.2]	6.00 [152.4]	6.00 [152.4]	△ OBSOLETE
1-858885-4	571.00 [14503.4]	6.00 [152.4]	6.00 [152.4]	△ OBSOLETE
1-858885-5	158.00 [4013.2]	6.00 [152.4]	6.00 [152.4]	△ OBSOLETE
1-858885-6	132.00 [3352.8]	6.00 [152.4]	6.00 [152.4]	△
1-858885-7	514.00 [13055.6]	6.00 [152.4]	6.00 [152.4]	△ OBSOLETE
1-858885-8	501.00 [12725.4]	6.00 [152.4]	6.00 [152.4]	△ OBSOLETE
1-858885-9	162.00 [4114.8]	6.00 [152.4]	6.00 [152.4]	△ OBSOLETE
2-858885-0	187.00 [4749.8]	6.00 [152.4]	6.00 [152.4]	△ OBSOLETE
2-858885-1	30.00 [762.0]	6.00 [152.4]	6.00 [152.4]	△
2-858885-2	139.00 [3530.6]	6.00 [152.4]	6.00 [152.4]	△ OBSOLETE
2-858885-3	155.00 [3937.0]	6.00 [152.4]	6.00 [152.4]	△ OBSOLETE
2-858885-4	180.00 [4572.0]	6.00 [152.4]	6.00 [152.4]	△ OBSOLETE
2-858885-5	36.00 [914.4]	6.00 [152.4]	6.00 [152.4]	△
2-858885-6	240.00 [6096.0]	6.00 [152.4]	6.00 [152.4]	△ OBSOLETE
2-858885-7	18.00 [457.2]	6.00 [152.4]	6.00 [152.4]	△
2-858885-8	100.00 [2540.0]	6.00 [152.4]	6.00 [152.4]	△
2-858885-9	200.00 [5080.0]	6.00 [152.4]	6.00 [152.4]	△ OBSOLETE
7-858885-1	30.00 [762.0]	6.00 [152.4]	6.00 [152.4]	△
7-858885-5	36.00 [914.4]	6.00 [152.4]	6.00 [152.4]	△

LOC	DIST	REVISIONS			
DF	SO	REV	DESCRIPTION	DATE	BY
		AF	REV PER ECO-05-002528	06-05	AA

- 1. TOLERANCE OF LEAD LENGTH:
UP TO 24 INCHES [609.6] = ±.12 [±3.1]
24 INCHES [609.6] & UP = 1%
- 2. MARKED PER MIL-STD-130 WITH BLACK INK.
- 3. LEAD COLOR IS WHITE UNLESS OTHERWISE SPECIFIED.
- 4. LEAD WILL MATE WITH AMP 1/2 RECEPTACLE WITH .53 [13.5] BARREL DEPTH.
- 5. OPERATING VOLTAGE: 10 KVDC AT 0 TO 70,000 FEET, -55°C TO 125°C.
- △ WHERE APPLICABLE PIGTAIL IS SOLDER DIPPED.
- △ INSULATION CUT TO LENGTH, BUT NOT REMOVED.



THIS DRAWING IS A CONTROLLED DOCUMENT.		DIN C.C.THOMAS 07-AUG-91	 Tyco Electronics Corporation Harrisburg, Pa 17105-3608												
DIMENSIONS: INCHES		CHK S.GLATFELTER 20-AUG-91													
TOLERANCES UNLESS OTHERWISE SPECIFIED:		APVD S.GLATFELTER 20-AUG-91	NAME LEAD ASSEMBLY, DBL END LGH-1/2 SHIELDED												
<table border="1"> <tr><td>0 PLC</td><td>± -</td></tr> <tr><td>1 PLC</td><td>± -</td></tr> <tr><td>2 PLC</td><td>± .02 [0.5]</td></tr> <tr><td>3 PLC</td><td>± -</td></tr> <tr><td>4 PLC</td><td>± -</td></tr> <tr><td>ANGLES</td><td>± -</td></tr> </table>		0 PLC	± -	1 PLC	± -	2 PLC	± .02 [0.5]	3 PLC	± -	4 PLC	± -	ANGLES	± -	PRODUCT SPEC APPLICATION SPEC	RESTRICTED TO
0 PLC	± -														
1 PLC	± -														
2 PLC	± .02 [0.5]														
3 PLC	± -														
4 PLC	± -														
ANGLES	± -														
MATERIAL SEE CALLOUTS		WEIGHT -	SIZE A1												
FINISH SEE CALLOUTS		CAGE CODE 00779	DRAWING NO 858885												
CUSTOMER DRAWING		SCALE 3:1	SHEET 1 OF 1												