

# SERIES 3450/3450R/3455R/3455RBV 15 AMP THERMOSTATS

## Typical Applications:

Power Supplies

Communication  
Equipment

Medical Equipment

Computers (Where  
High AMP Loads are  
Present)



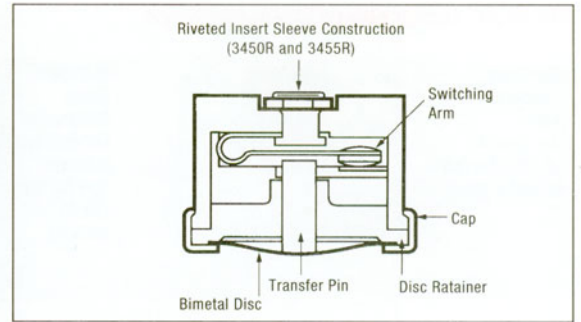
The Series 3450/3455R is a snap-acting, non-adjustable precision thermostat especially suited for industrial and electrical equipment.

The 3450 (.390" or 10mm overall) is ideal for applications that require precision control of high electric loads to 8 Amp resistive.

The 3450R and 3455R have a patented metal insert rivet construction.

The 3455R (.484" or 12.5mm) overall, has higher spacing as required by European approval agencies. Model 3455RBV is an epoxy overmold version of the 3455R, specifically designed for electrical insulation or protection in a high humidity environment. Consult factory for performance qualifications.

To insure that a safe combination of thermostat and application is achieved, the purchaser must determine product suitability for their individual requirements.



## \*Series 3450/3450R/3455R/ 3455RBV

MODEL	ELECTRIC LIFE CYCLES	120 VAC	240 VAC	277VAC
3450	100,000	8.0A	-	-
3450R/	100,000	15A	8.3A	7.2A
3455R	100,000	4.4FLA 26.4LRA	2.2FLA 13.2LRA	-
	6,000	5.8FLA 34.8LRA	2.9FLA 17.4LRA	-
3455RBV	100,000	15A	8.3A	-
	6,000	5.8A 34.8LRA	2.9A 17.4LRA	-

A: Amps

FLA: Full Load Amps

LRA: Locked Rotor Amps

Contacts are available for millivolt and milliamp applications.

\*Includes UL and CSA ratings.

Consult Elmwood Sensors for additional ratings.

## Key Features:

- Electric Rating to 15 Amp 120 VAC Resistive
- Environmental Exposure 0° to 350° F (-18° to 177° C)
- UL recognized and CSA certified and European Approved
- Single-Pole, Single-Throw (SPST)
- Pre-set and Tamperproof
- Variety of Mounting Brackets and Terminals Available