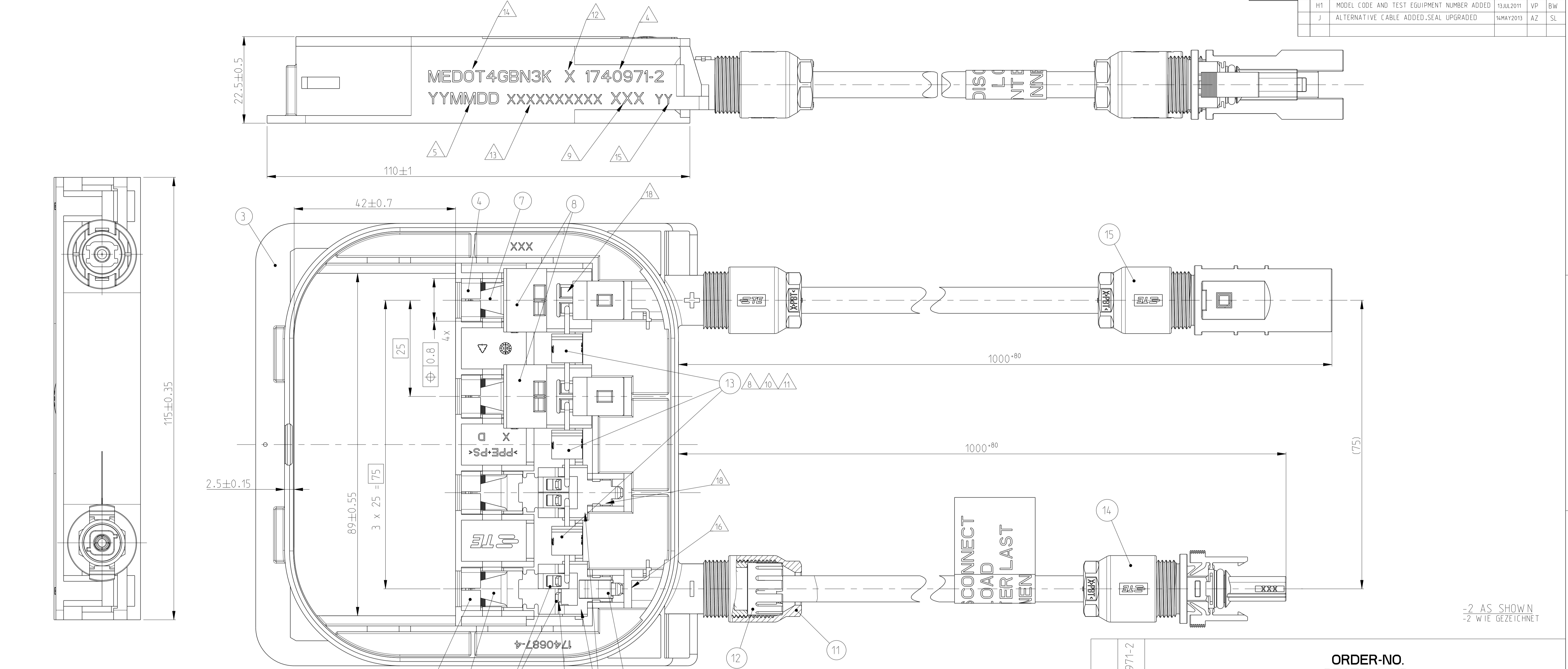


VIEW WITH ASSEMBLED COVER
 ANSICHT MIT MONTIERTEM DECKEL

LOC	DIST	REV	DATE	BY	CHK	APPV
A1	-	G2	09DEC2010	M.S	HS	
		H1	13JUL2011	VP	BW	
		J	14MAY2013	AZ	SL	



- 1 SHROUDING COVER ITEM NO. 8 NOT SHOWN
- 2 COVER NOT ASSEMBLED WITH LOWER PART. ENCLOSE LOOSELY
- 4 PART NUMBER WITH PREFIX AND SUFFIX NUMBER
- 5 PRODUCTION DATE (YYMMDD)
- 6 FOR CABLES PER APPLICATION SPEC. 114-18488-1 WITH OUTER DIAMETER 5.5-7.8
- 7 PHOTOVOLTAIC CABLE ASSEMBLY ITEM NO. 15 AND 16 NOT SHOWN
- 8 DIODE ACCORDING TO SPECIFICATION 108-94046-1
- 9 MANUFACTURING LOCATION CODE
- 10 DIODE SL1515A ACC. SPEC. 108-94243 OR DIODE SL1515B ACC. SPEC. 108-94244 CAN BE ALTERNATIVELY USED.
- 11 ONLY DIODES OF THE SAME TYPE RESP. DESIGNATION ARE PERMITTED FOR USE IN ONE AND THE SAME SOLAR BOX. ONLY SOLAR BOXES WITH THE SAME DIODES ARE PERMITTED TO PACK IN ONE AND THE SAME CORRUGATED SHIPPING BOX
- 12 MARK FOR DIODE TYPE: LEAVE BLANK FOR DIODE SL1515, A FOR DIODE SL1515A, B FOR DIODE SL1515B.
- 13 SERIAL NUMBER
- 14 MODEL CODE ACCORDING TE-SPEC. 404-74000-1
- 15 TEST EQUIPMENT NUMBER
- 16 CABLES WITH WELDED TIP INSERTED INTO JUNCTION BOX
- 17 I_{SCmax} = 13A ACC. IEC 61215 ED. 2.0. SECTION 10.18
- 18 TE SPRING CLAMP CAN BE EQUIPPED OPTIONALLY
- 19 CABLE ASSY WITH SOLAR CABLE ZHSCGB.PN1983530-1 CAN BE ALTERNATIVELY USED

1740971-2		ORDER-NO. BESTELL-NR.			
-	1	15	SOLAR CABLE WITH PIN CONNECTOR, BLACK, ZHSCG SOLARKABEL MIT STIFTSSTECKER, SCHWARZ, ZHSCG	BLACK SCHWARZ	-
-	1	14	SOLAR CABLE WITH SOCKET CONNECTOR, BLACK, ZHSCG SOLARKABEL MIT BUCHSENSTECKER, SCHWARZ, ZHSCG	BLACK SCHWARZ	-
-	3	13	BYPASS DIODE TYPE: SL1515 BYPASS DIODE TYP: SL1515	-	-
-	2	12	PINCH RING SEAL INMOLDED, ASSY KLEMMRING DICHTUNG INMSPRITZT, ASSY	BLACK SCHWARZ	PA66 / LSR PA66 / LSR
-	2	11	CABLE SCREW JOINT KABELVERSCHRÄUBUNG	BLACK SCHWARZ	PBT
-	1	10	RING FOR ULTRASONIC WELDING RING FÜR ULTRASCHALLSCHWEISSEN	-	-
-	1	9	MEMBRANE VENTS MEMBRANE	-	-
-	4	8	SHROUDING COVER ABDECKHAUBE	BLACK SCHWARZ	PET
-	4	7	FOIL SPRING FOLIENFEDER	PLAIN BLANK	STAINLESS STEEL ROSTFREIER STAHL
-	6	6	TE SPRING CLAMP WITH ANTI OVERSTRESS TE-KÄFIGZUFEDER MIT ÜBERDEHNFEDER	PLAIN BLANK	STAINLESS STEEL ROSTFREIER STAHL
-	2	5	TE SPRING CLAMP WITH ANTI OVERSTRESS TE-KÄFIGZUFEDER MIT ÜBERDEHNSCHUTZ	PLAIN BLANK	STAINLESS STEEL ROSTFREIER STAHL
-	4	4	CONTACT RAIL STROMSCHENE	TIN HOT DIPPED FEUERVERZINNT	CUZn
-	1	3	SOLAR MODULE BOX LOWER PART SOLAR MODUL BOX UNTERTEIL	BLACK SCHWARZ	PPE+PS
-	1	2	O-RING SEAL O-RING DICHTUNG	RED	SILICON
-	1	1	SOLAR MODULE BOX COVER SOLAR MODUL BOX DECKEL	BLACK SCHWARZ	PC
PIECES STÜCK	ITEM-NO. POS.	DESCRIPTION BENENNUNG		SURFACE OBERFLÄCHE	MATERIAL
				COLOUR/FARBE	

THIS DRAWING IS A CONTROLLED DOCUMENT. DWN: J.Zapf 21MAR2007
 CHK: H.Scherer 21MAR2007
 APV: G.Eldmeier 21MAR2007

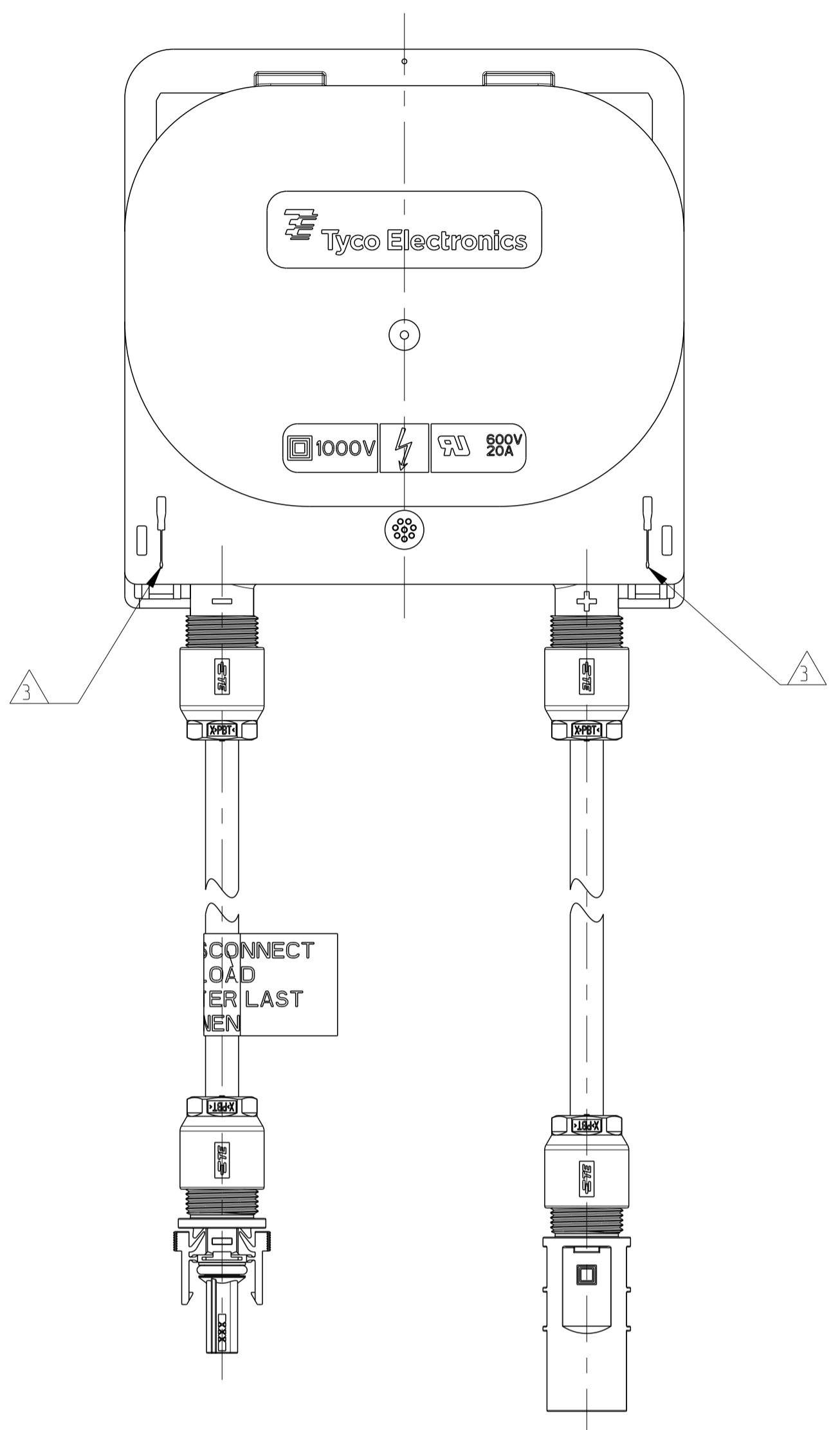
TE Connectivity

SOLAR MODULE BOX MEDOT CABLE ASSY
 SOLAR MODUL BOX MEDOT KABEL, ASSY

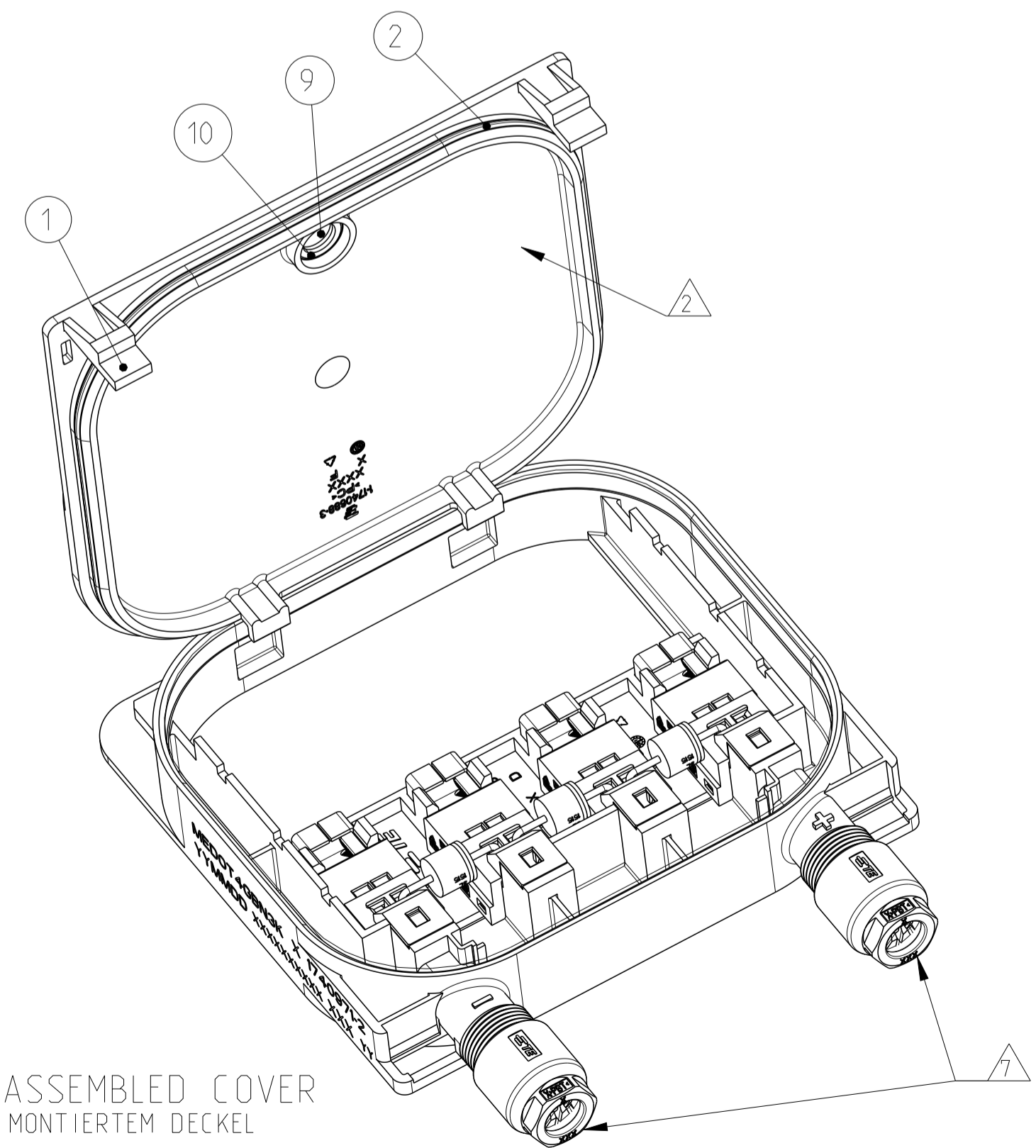
SIZE: A1 00779
 CAGE CODE: 114-18488-1
 DRAWING NO: 1740971-2
 RESTRICTED TO: NR FÜR

Customer Drawing /KUNDENZEICHNUNG SCALE: 2:1 SHEET 1 OF 2 REV J

LOC	DIST	REV	DATE	OWN	APVD
A1	-				
PROJECT NO. EGEMN07053		SEE SHEET 1			



VIEW WITH ASSEMBLED COVER
 ANSICHT MIT MONTIERTEM DECKEL



VIEW WITH ASSEMBLED COVER
 ANSICHT MIT MONTIERTEM DECKEL

MOUNTING INSTRUCTION

- FOR COVER, ASSY:**
1. MOUNT COVER ITEM NO. 1 AND 2 INTO THE LOWER PART ITEM NO. 3 AND CLOSE IT. (LATCH SNAP IN).
 2. RE-OPEN: PUT IN MARKED OPENING \triangle 3 SCREWDRIVER 3mm AND MOVE LATCH UNTIL LOCKING LATCH FREE THE COVER. OPEN COVER ITEM NO. 1 AND 2

MONTAGEANWEISUNG

- FÜR DECKEL, ASSY:**
1. DECKEL ITEM NO. 1 UND 2 IN DAS UNTERTEIL ITEM NO. 3 EINHÄNGEN UND SCHLIESSEN. (LASCHE RASTET EIN).
 2. ÖFFNEN: SCHRAUBENDREHER 3mm IN MARKIERTE ÖFFNUNG \triangle 3 EINSTECKEN UND LASCHE BEWEGEN BIS RASTHAKEN DEN DECKEL FREI GIBT. DECKEL ITEM NO. 1 UND 2

PACKAGING:

35 PIECES SOLAR MODULE BOX ASSY'S PACKAGED IN TWO ROWS OF 17 AND 18 BOXES ON TOP OF CORRUGATED LAYER PAD IN CORRUGATED SHIPPING BOX PER TE-SPEC. 107-18052. SOLAR MODULE BOX ASSY'S COVERED WITH CORRUGATED LAYER PAD .
 35 PIECES SOLAR MODULE BOX COVER ASSY'S ITEM NO. 1 PACKED ON TOP OF CORRUGATED LAYER 15 IN THE FIRST AND SECOND LEVEL, 5 IN THE THIRD LEVEL, PACKED IN ESD PLASTIC BAG. ON TOP - USED AS COVER - PAPER CUSHION

PACKAGING UNIT: 35 PIECES
 MINIMUM ORDER QUANTITY: 35 PIECES

VERPACKUNG:

35 STÜCK SOLAR MODUL BOX ASSY'S ZWEIREIHIG MIT 17 UND 18 BOXEN VERPACKT AUF ZWISCHENLAGENPAPIER IN VERSANDKARTON NACH TE-SPEZ.107-18052. SOLAR MODUL BOX ASSY MIT ZWISCHENWELLPAPIER -ABGEDECKT.
 35 STÜCK SOLAR MODUL BOX DECKEL ASSY'S ITEM NO. 1 AUF ZWISCHENLAGENWELLPAPIER GEPACKT 15 IN DER ERSTEN UND ZWEITEN LAGE, 5 IN DER DRITTEN LAGE. OBENAUF - ALS ABDECKUNG VERWENDET - PAPIERPOLSTERKISSEN. VERPACKT IN ESD-KUNSTSTOFF-BEUTEL.

VERPACKUNGSEINHEIT: 35 STÜCK
 MINDESTBESTELLMENGE: 35 STÜCK

-2 AS SHOWN
 -2 WIE GEZEICHNET

THIS DRAWING IS A CONTROLLED DOCUMENT.		OWN J.Zapf ZIMAR2007																	
DIMENSIONS: MASSENHEITEN: mm		CHK H.Scherer ZIMAR2007																	
TOLERANCES UNLESS OTHERWISE SPECIFIED: ALLE DIMENSIONEN		APVD G.Feldmeier ZIMAR2007	NAME SOLAR MODULE BOX MEDOT CABLE ASSY SOLAR MODUL BOX MEDOT KABEL, ASSY																
<table border="1"> <tr><td>0</td><td>PLC</td><td>±</td></tr> <tr><td>1</td><td>PLC</td><td>±</td></tr> <tr><td>2</td><td>PLC</td><td>±</td></tr> <tr><td>3</td><td>PLC</td><td>±</td></tr> <tr><td>4</td><td>PLC</td><td>±</td></tr> </table>		0	PLC	±	1	PLC	±	2	PLC	±	3	PLC	±	4	PLC	±	PRODUCT SPEC 108-94.064	SIZE A1	
0	PLC	±																	
1	PLC	±																	
2	PLC	±																	
3	PLC	±																	
4	PLC	±																	
MATERIAL		APPLICATION SPEC VERARBEITUNGSSPEZ 114-104.00-1	DRAWING NO. 00779																
FINISH/SCHLEIFLÄCHE/FARBE		WEIGHT GEWICHT	DRAWING NO. 1740971-2																
		Customer Drawing	/KUNDENZEICHNUNG																
		SCALE MASSSTAB	SHEET BLATT																
		5:1	2 OF 2																
			REV J																